

G&S Valves Ltd.

Alder Works, Catteshall Lane, Godalming, Surrey, GU7 1JS England  
Ph. +44 (0) 1483415444, Fax: +44 (0) 01483 426891  
Web. www.GSValves.co.uk, E-Mail GSValves@aol.com



Drawn: A.R.Grenside

Weight: 94.74 Grams

Customer:

Thomas Eversberg

Issue: 1

A3

Dwg No.

61593

SCALE:2:1

1 of 2

Date: 01.12.2020

Material: 214N

4.142

0.015 / 45°

0.015 / 45°

0.130

0.130

0.373 Ref.

R0.625

0.150  $\varnothing$

R0.250

R0.020

$\varnothing$  0.3735  
 $\varnothing$  0.3725

7.5°

Dish  
PTO

$\varnothing$  0.281  
 $\varnothing$  0.279

$\varnothing$  1.690

0.050

45°

Stellite Tip

Underhead Gauge X  $\varnothing$  1.345  
Underhead Gauge Z 0.144

Seat Gauge X  $\varnothing$  1.610  
Seat Gauge Z 0.090

# G&S Valves Ltd.

Alder Works, Catteshall Lane, Godalming, Surrey. GU7 1JS England  
 Ph. +44 (0) 1483415444, Fax: +44 (0) 01483 426891  
 Web. www.GSValves.co.uk, E-Mail GSValves@aol.com



Drawn: A.R.Grenside

Weight: 94.74 Grams

Customer: **Thomas Eversberg**

Dwg No. **61593**

Issue: 1 A3

Scale: 5:1 2 of 2

Date: **01.12.2020**

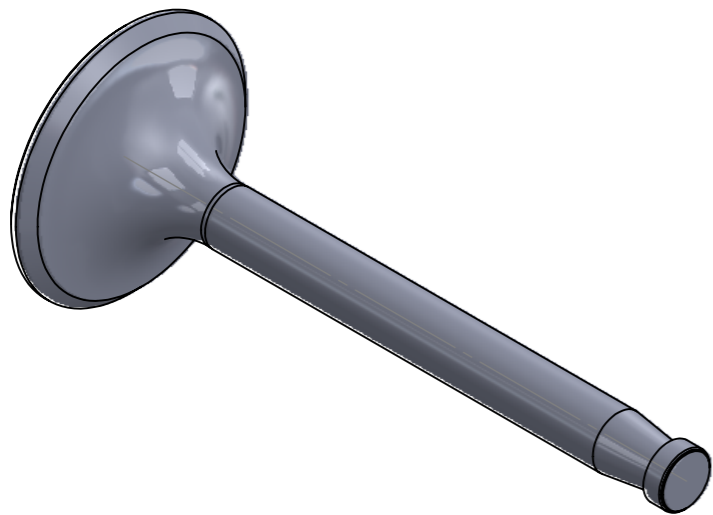
Material: **214N**

This drawing and any information or descriptive material set out on it are the confidential and copyright property of G&S Valves Ltd. and MUST NOT BE DISCLOSED, COPIED, LOANED in whole or part or used for any purpose without the written permission of G&S Valves Ltd.

Unless Otherwise Stated:  
 Linear Tol.: **±0.2**, Angular Tol.: **0°15'**  
 Surface Finish: **0.8µm**  
 All Dimensions: **mm**  
 Drawing Produced In  
 Accordance With: **BS8888**

Volume of Dish: **2.03 cc**

Stabilised	Mask Tips	Stellite Seat	Die Finish Head
100% Inspection	Lap Tips	Harden Seat	Die Finish Underhead
ISIR Report	Super Polished *	Pulse Plasma Nitride *	Hollow Stems
CofC	Swirl Polish	Tufftride	Sodium Filled



Laser Etch:  
 Stamp:  
 Chemical Etch:

Issue Changes:

